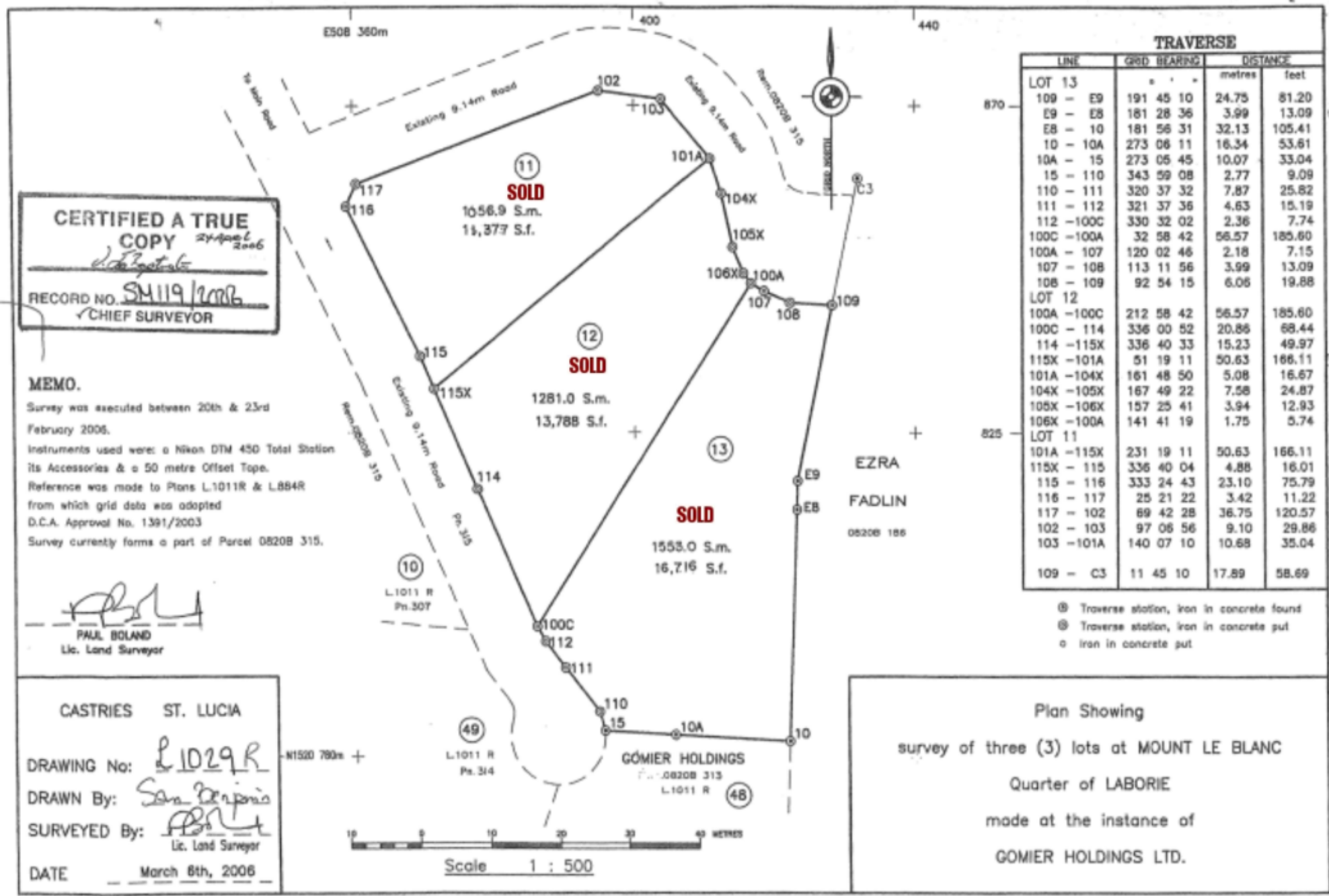


CERTIFIED A TRUE COPY
S. Benjamins
 RECORD NO. SM119/2006
 CHIEF SURVEYOR

MEMO.
 Survey was executed between 20th & 23rd February 2006.
 Instruments used were: a Nikon DTM 450 Total Station its Accessories & a 50 metre Offset Tape.
 Reference was made to Plans L.1011R & L.884R from which grid data was adopted
 D.C.A. Approval No. 1391/2003
 Survey currently forms a part of Parcel 0820B 315.

Paul Boland
PAUL BOLAND
 Lic. Land Surveyor

CASTRIES ST. LUCIA
 DRAWING No: L1029R
 DRAWN By: *S. Benjamins*
 SURVEYED By: *Paul Boland*
 Lic. Land Surveyor
 DATE March 6th, 2006



LINE	GRID BEARING	DISTANCE	
		metres	feet
LOT 13			
109 - E9	191 45 10	24.75	81.20
E9 - E8	181 28 36	3.99	13.09
E8 - 10	181 56 31	32.13	105.41
10 - 10A	273 06 11	16.34	53.61
10A - 15	273 05 45	10.07	33.04
15 - 110	343 59 08	2.77	9.09
110 - 111	320 37 32	7.87	25.82
111 - 112	321 37 36	4.63	15.19
112 - 100C	330 32 02	2.36	7.74
100C - 100A	32 58 42	56.57	185.60
100A - 107	120 02 46	2.18	7.15
107 - 108	113 11 56	3.99	13.09
108 - 109	92 54 15	6.06	19.88
LOT 12			
100A - 100C	212 58 42	56.57	185.60
100C - 114	336 00 52	20.86	68.44
114 - 115X	336 40 33	15.23	49.97
115X - 101A	51 19 11	50.63	166.11
101A - 104X	161 48 50	5.08	16.67
104X - 105X	167 49 22	7.58	24.87
105X - 106X	157 25 41	3.94	12.93
106X - 100A	141 41 19	1.75	5.74
LOT 11			
101A - 115X	231 19 11	50.63	166.11
115X - 115	336 40 04	4.88	16.01
115 - 116	333 24 43	23.10	75.79
116 - 117	25 21 22	3.42	11.22
117 - 102	69 42 28	36.75	120.57
102 - 103	97 06 56	9.10	29.86
103 - 101A	140 07 10	10.68	35.04
109 - C3	11 45 10	17.89	58.69

⊕ Traverse station, iron in concrete found
 ⊙ Traverse station, iron in concrete put
 ○ iron in concrete put

Plan Showing
 survey of three (3) lots at MOUNT LE BLANC
 Quarter of LABORIE
 made at the instance of
 GOMIER HOLDINGS LTD.

